

READ ME FIRST
TiCad CANTO

Care:
The frame of your TiCad trolley is made of a high-quality, rust-proof material and has been sealed to keep out rain. The frame can be cleaned with a conventional household cleaning product – but **not** with abrasive cleaners. The titanium's shine can be restored with a special cleaning oil available from TiCad. The hubs of the wheels and the couplings **must not** be oiled or greased.

WARRANTY
Your TiCad trolley has been designed and built with great care. Please get in touch with your TiCad dealer if you notice anything unusual. The provision of spare parts or repairs performed under warranty do not extend the warranty period. The warranty does not apply to damage caused by carelessness or rough handling, overloading the trolley, inappropriate operation, external force, submersion in water and unauthorised persons' actions. The warranty only applies if the enclosed operating instructions have been observed and the trolley is being appropriately used and cared for. Technical changes and new developments do not entitle warranty holders to upgrades.
The warranty period for the titanium frame and the wheels is 5 years from the date of purchase. The warranty does not apply to wear parts such as e.g. tyres, leather handle, fastening straps.

Technical data and dimensions

Model	TiCad Canto
Weight of frame and wheels	3,9 kg
Pack size	68x38x 14 cm

SERVICE
If you experience any problems with your TiCad trolley, please first contact your TiCad dealer, one of our service centers or get in touch with us at our office in Altenstadt, Germany.
We will then arrange for your TiCad trolley to be collected and returned to us and help you with the packaging material. If you want us to perform an inspection or repair, we also offer to assist you directly without contacting your TiCad dealer.
For trolleys located outside Germany, please always first contact your local service staff.

Postal address: TiCad GmbH & Co. KG
Heegwaldstr. 3–5
D-63674 Altenstadt -Waldsiedlung
Phone: +49 (0)6047 / 987 90-14
Fax: +49 (0)6047 / 987 90-39
E-Mail: service@ticad.de

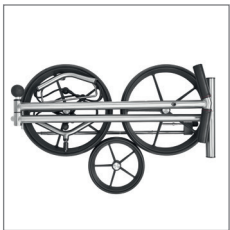
PUBLISHER
TiCad GmbH & Co. KG, Heegwaldstr. 3–5, D-63674 Altenstadt
www.ticad.de
The above information, wording and images have been largely standardised and are primarily intended to describe the trolley's basic functions. For this reason, the product supplied to you may slightly differ from the above descriptions, in particular if your trolley is a new version. This „Read Me First“ manual must not be copied or used otherwise in whole or part without TiCad GmbH & Co. KG's consent.
Please carefully retain your Read Me First manual and the original packaging.
Please read our General Terms and Conditions of Business www.ticad.de.

Concept et réalisation graphique :
Bild, Satz und Sieg – Eugen-Kaiser-Straße 18, 63450 Hanau
www.bild-satz-und-sieg.de

YOUR NOTES

TiCad®

READ ME FIRST
TiCad CANTO



READ ME FIRST

TiCad CANTO

Congratulations!

You have chosen an excellent product manufactured by TiCad! All of our high-quality products are carefully handmade at our production facility in Altenstadt (Hessen, Germany).

To ensure that you will be able to enjoy your trolley for a very long time, please take some time to carefully read through these operating instructions, which contain important information that will make using your trolley a lot easier.

If you have any further questions regarding the use or care of your trolley, please contact your TiCad dealer.

We would like to wish you many enjoyable games of golf and a lot of success! Your TiCad team.

YOUR TICADCANTO IN DETAIL

- | | |
|------------------------|-----------------------------|
| 1 Delta leather handle | 10 Locking brake |
| 2 Umbrella adapter | 11 GRP* wheel |
| 3 Score nuts | 12 Bottom bag holder |
| 4 Drawbar | 13 Front GRP* wheel |
| 5 Drawbar adjuster | 14 Invisible shaft fastener |
| 6 Top bag holder | 15 Bottom bar |
| 7 Fastening straps | 16 Front shaft |
| 8 Centre bar | 17 Knurled sleeve |
| 9 Shaft | |

*Glass-fibre reinforced plastic (PA 6 GF 30)

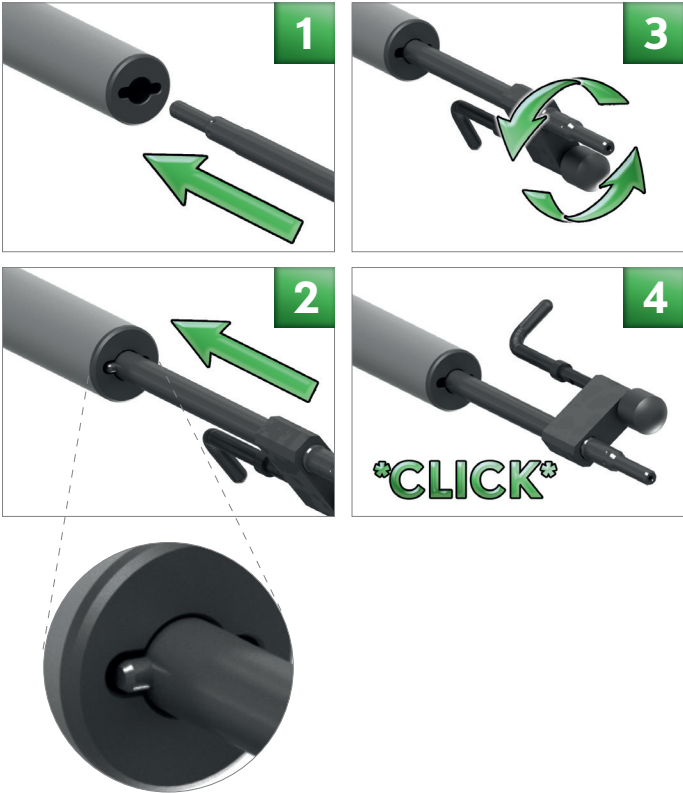
SETTING UP YOUR TROLLEY

Fitting the shaft:

- 1 Insert the shaft
- 2 Insert the shaft through the long hole as far as it will go
- 3 Press shaft against the inside spring and turn it to the left
- 4 Continue turning until the shaft engages (brake faces upwards)
- 5 Disassemble in reversed order



Image:
TiCad Canto with GRP* wheels,
also available as
TiCad Canto with TiTec titanium wheels



Attaching the wheels:

The wheels can be attached and removed by pulling back the knurled sleeve. When attaching the wheels, slightly turning the sleeve can make it easier for the wheels to engage.

Always make sure that no dirt gets into the hub. The hubs must not be oiled or greased.

Setting up your trolley:

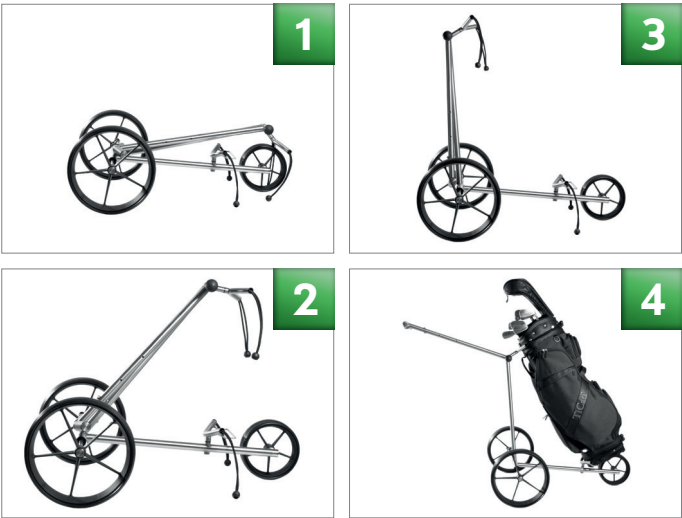
The frame of your TiCad trolley is easy to set up and fold together. To do so, push the bottom bar right down until it reaches the bottom limit stop and the centre bar right up until it reaches the top limit stop.

Bag holder:

Both bag holders are attached to the trolley with expansion bolts. The expansion bolts must not be turned in too far (see images), because there has to be a gap between the expansion bolts and the start of the threads. To fit the bag holder, insert it into the frame and then align and fix it into place by twisting the bag holder.

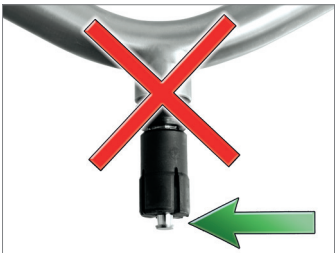


Removing and attaching the wheels



Bag holder

Expansion bolt in the correct position



Expansion bolt turned in too far

Attaching the golf bag:

To fasten the golf bag, insert one of the round fasteners into the strap of the opposite fastening strap. When doing so, make sure not to flick the fasteners, as this may cause injury. To undo the fastening straps, hold on to the bottom strap and then remove the top fastening strap with your other hand.

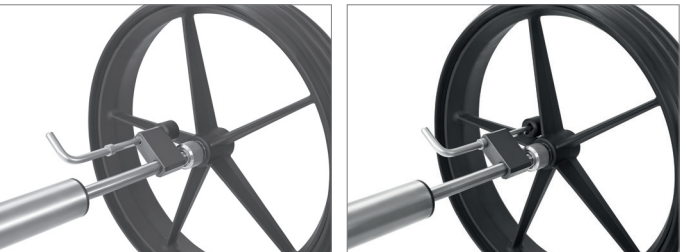
We recommend fitting the drawbar only once the golf bag has been attached to prevent the trolley from tipping over.

USING YOUR TROLLEY

Always move your TiCad trolley slowly and carefully when moving over rough ground that contains stones or pot-holes. Avoid kerb stone edges.

Locking brake:

The locking brake has to be fitted on the left wheel. To open and apply the brake, simply move the locking lever back or forward.



Locking brake when open

Locking brake when applied

Umbrella adapter:

The umbrella adapter is located at the top end of the drawbar. Screw the umbrella holder into the tapered adapter.



Umbrella adapter with umbrella holder

Adjusting the drawbar:

As soon as the golf bag has been attached to the TiCad trolley, you can adjust the drawbar to a comfortable height for you. You can loosen the drawbar by turning the black handle counter-clockwise 3 to 4 times. Only start moving the drawbar into the right position once it has been completely freed and moves without resistance. To fasten the drawbar, turn the black handle in the opposite direction. When doing so, move the drawbar slightly up and down to allow the fastening mechanism's teeth to fully engage with one another and to prevent them from becoming damaged.



Adjusting the drawbar

TiCad®

