

READ ME FIRST

TiCad PRO

WARRANTY

Your TiCad trolley has been designed and built with great care. Please get in touch with your specialist dealer or contact TiCad directly if you notice anything unusual. The provision of spare parts or repairs performed under warranty do not extend the warranty period. The warranty does not apply to damage caused by carelessness or rough handling, overloading the trolley, inappropriate operation, external force, submersion in water and unauthorised persons' actions. The warranty only applies if the enclosed operating instructions have been observed and the trolley is being appropriately used and cared for. Technical changes and new developments do not entitle warranty holders to upgrades.

The warranty period for the titanium frame and the wheels is 5 years from the date of purchase. The warranty does not apply to wear parts such as e.g. tyres, leather handle, fastening straps.

Technical data and dimensions

Model	TiCad Pro
Weight of frame + wheels	3.7 kg
Pack size	66 x 32 x 14 cm
Frame dimension	66 x 21 x 14 cm

SERVICE

If you experience any problems with your TiCad trolley, please first contact your specialist dealer or get in touch with us at our office in Altstadt, Germany.

We will then arrange for your TiCad trolley to be collected and returned to us and help you with the packaging material. If you want us to perform an inspection or repair, we also offer to assist you directly without contacting your specialist dealer.

For trolleys located outside Germany, please always contact your specialist dealer first or contact us directly.

Postal address:

TiCad GmbH & Co. KG
Heegwaldstr. 3–5
D-63674 Altstadt -Waldsiedlung
Germany

Phone:

+49 (0)6047 / 987 90-14

Fax:

+49 (0)6047 / 987 90-39

E-Mail:

service@ticad.de

PUBLISHER

TiCad GmbH & Co. KG, Heegwaldstr. 3–5, D-63674 Altstadt
www.ticad.de

The above information, wording and images have been largely standardised and are primarily intended to describe the trolley's basic functions. For this reason, the product supplied to you may slightly differ from the above descriptions, in particular if your trolley is a new version. This "Read Me First" manual must not be copied or used otherwise in whole or part without TiCad GmbH & Co. KG's consent.

Please carefully retain your Read Me First manual and the original packaging.

Please read our General Terms and Conditions of Business at
www.ticad.de.

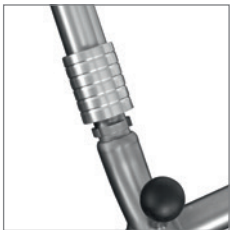
Concept & graphic implementation:
www.bild-satz-und-sieg.de
Eugen-Kaiser-Straße 18, 63450 Hanau
Phone +49 (0)6181 - 6104833

YOUR NOTES

TiCad®

READ ME FIRST

TiCad PRO



READ ME FIRST

TiCad PRO

Congratulations!

You have chosen an excellent product manufactured by TiCad! All of our high-quality products are carefully handmade at our production facility in Altenstadt (Hessen, Germany).

To ensure that you will be able to enjoy your trolley for a very long time, please take some time to carefully read through these operating instructions, which contain important information that will make using your trolley a lot easier.

If you have any further questions regarding the use or care of your trolley, please contact your specialist dealer.

We would like to wish you many enjoyable games of golf and a lot of success! Your TiCad team.

YOUR TICAD PRO IN DETAIL

- | | |
|---------------------------|----------------------|
| 1 Drawbar handle | 9 Shaft |
| 2 Umbrella adaptor | 10 Sliding sleeve |
| 3 Drawbar | 11 GRP* wheel |
| 4 Top Fixfest coupling | 12 Bottom bar |
| 5 Top bag holder | 13 Bottom bag holder |
| 6 Fastening straps | 14 Wear protection |
| 7 Centre bar | |
| 8 Bottom Fixfest coupling | |

*Glass-fibre reinforced plastic (PA 6 GF 30)

SETTING UP YOUR TROLLEY

Fitting the shaft:

- 1 Insert the shaft
- 2 Insert the shaft through the long hole as far as it will go
- 3 Press shaft against the inside spring and turn it to the left
- 4 Continue turning until the shaft engages (brake faces upwards)
- 5 Disassemble in reversed order

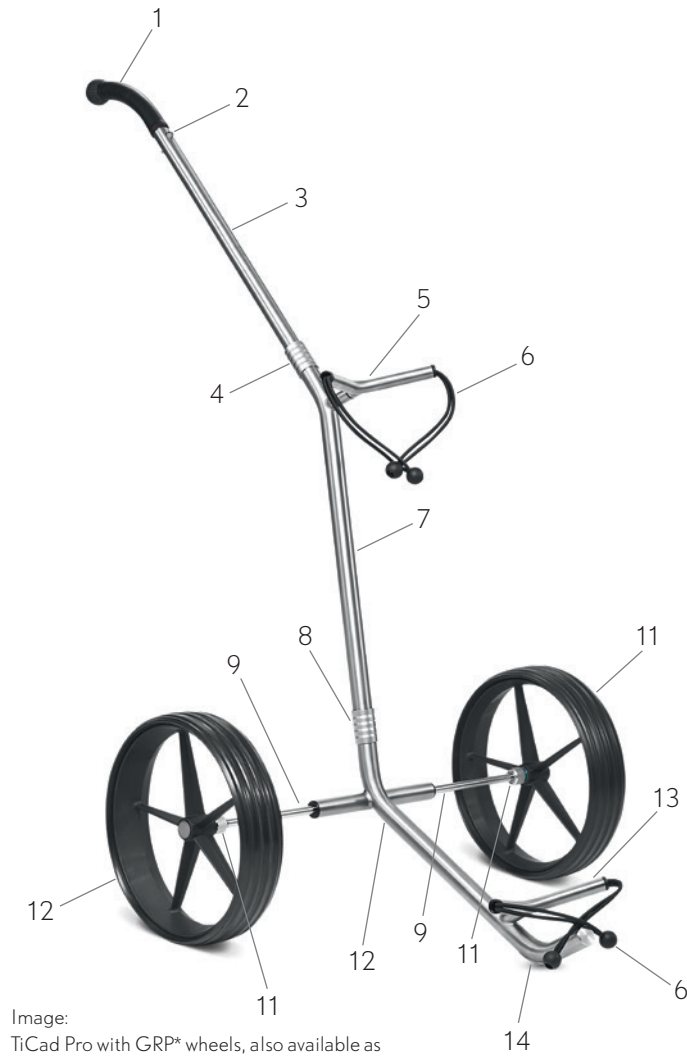
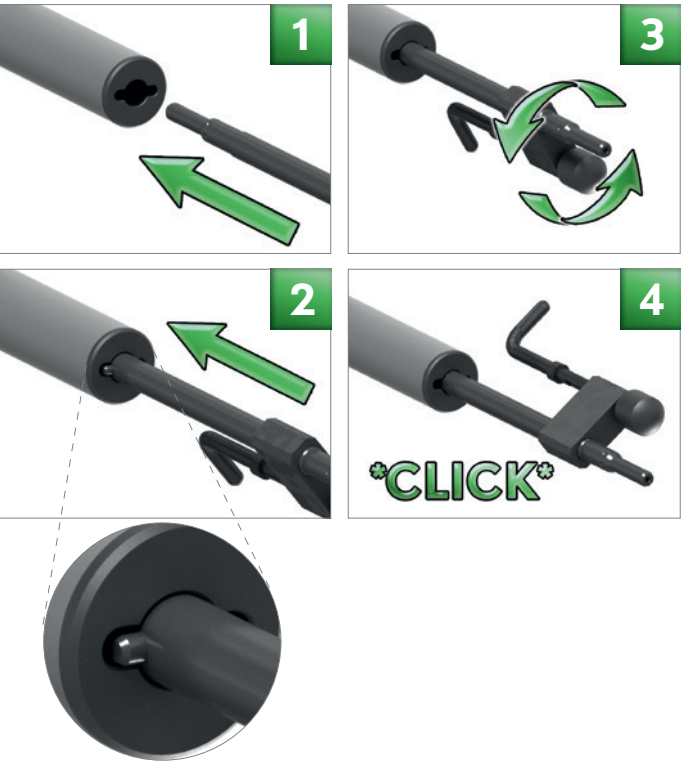


Image:
TiCad Pro with GRP* wheels, also available as
TiCad Pro Classic with titanium wheels



Attaching the wheels:

The wheels can be attached and removed by pulling back the knurled sleeve. When attaching the wheels, slightly turning the sleeve can make it easier for the wheels to engage.

Always make sure that no dirt gets into the hub. The hubs must not be oiled or greased.

Frame connections (Fixfest couplings):

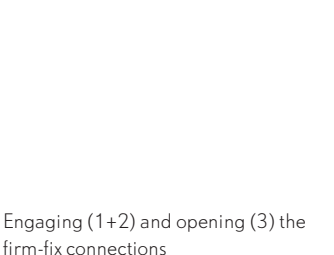
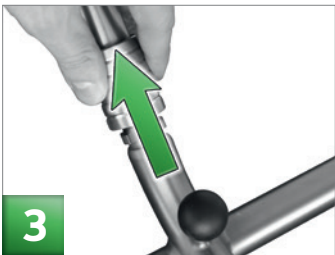
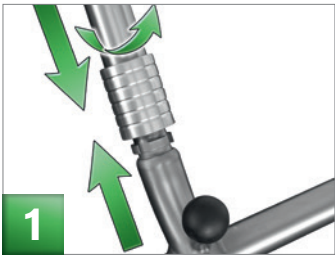
The frame sections of your TiCad trolley are connected to one another with Fixfest couplings. To connect the two frame sections, simply press them into one another and slightly turn one of the sections to allow the coupling system to engage. It will have engaged once the outer ring has slid over the joint. To open the coupling, pull the outer ring back.

Bag holder:

The top bag holder is fitted into place with an expansion bolt. The expansion bolt must not be turned in too far (see images), because there has to be a gap between the expansion bolt and the start of the thread. To fit the bag holder, insert it into the frame and then align and fix it into place by tightening the bolt.



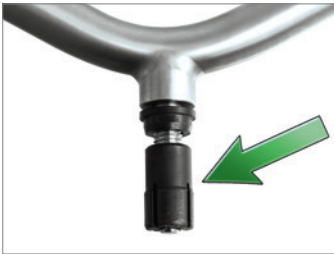
Removing and attaching the wheels



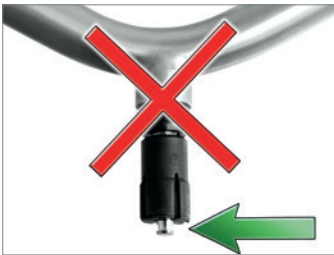
Engaging (1+2) and opening (3) the firm-fix connections



Bag holder



Expansion bolt in the correct position



Expansion bolt turned in too far

Attaching the golf bag:

Put your golf bag onto the trolley before attaching the drawbar. To fasten the golf bag, insert one of the round fasteners into the strap of the opposite fastening strap. When doing so, make sure not to flick the fasteners, as this may cause injury. To undo the fastening straps, hold on to the bottom strap and then pull out the top fastening strap with your other hand.

We recommend fitting the drawbar only once the golf bag has been attached to prevent the trolley from tipping over.

USING YOUR TROLLEY

Always move your TiCad trolley slowly and carefully when moving over rough ground that contains stones or pot-holes. Avoid kerb edges.

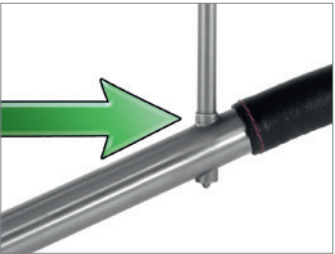
Umbrella adaptor:

The umbrella adaptor is located at the top end of the drawbar. Screw the umbrella holder into the tapered adaptor. The adaptor can only be used in the standard position on the drawbar.

Care:

The frame of your TiCad trolley is made of a high-quality, rust-proof material and has been sealed to keep out rain. The frame can be cleaned with a conventional household cleaning product – but **not** with abrasive cleaners. The titanium's shine can be restored with a special cleaning oil available from TiCad. The hubs of the wheels and the couplings **must not** be oiled or greased.

TiCad®



TiCad umbrella adaptor